



CONNECTED PHARMACY

*UNLOCKING & INTEGRATING
PHARMACY NETWORKS
ACROSS THE MIDLANDS*



Launch Webinar

4th May 2022





WELCOME



Housekeeping

- The chat function for participation
- Q&A for direct questions
- Webinar is being recorded and will be shared post session

Join the conversation on your Laptop or Smartphone, go to:

www.menti.com

Add the code:

4139 1293





CONNECTED PHARMACY

*UNLOCKING & INTEGRATING
PHARMACY NETWORKS
ACROSS THE MIDLANDS*



Launch Webinar

4th May 2022





SPEAKERS

- **CAROLINE GOULDING**

*Head of Primary Care Commissioning
– East Midlands*

- **JACKIE BUXTON**

*Regional Senior Pharmacy Integration Lead –
NHS Midlands*

- **AMANDA MOLLOY**


- **GUY LUBITSH**

- **NATHAN RENDEL**

Collaborate Consulting



OBJECTIVES

- To understand the regional/local context for the Connected Pharmacy Programme
 - To connect with pharmacy teams across your locality and learn from this experience
 - To understand what you can expect from us and what we need from you
 - To begin to explore personal development as a leader/coach
 - To get involved in strategic cross sector initiatives
 - Prepare for the first virtual workshop
- 



**GUEST
SPEAKER**



CAROLINE GOULDING

*Head of Primary Care Commissioning
– East Midlands*



WHAT'S NEXT?

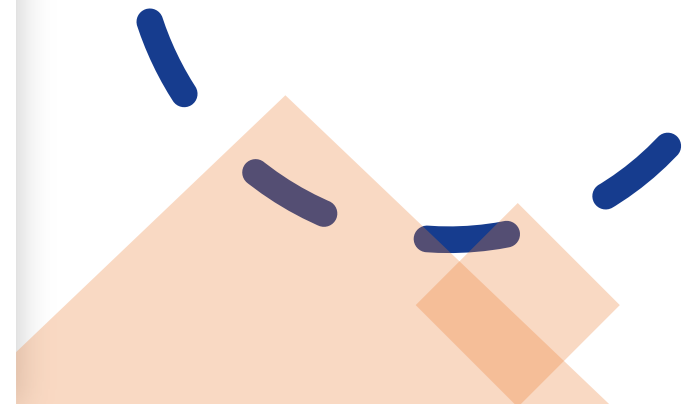


On your laptop or Smartphone,
go to:

www.menti.com

Add the code:

4139 1293





KEY LEADERSHIP DOMAINS

Contextual domain

Understanding the macroeconomic agenda (national policy e.g. opportunities and constraints); applying this to enhance local leadership and conditions for change (formal and informal strategy, culture and environment) to be more conducive for quality improvement and efficiency.

Technical domain

Making informed choices based on awareness, understanding and some experiences of the range of improvement science and change philosophies, approaches, methods and tools.

Relational domain

Leading change and engaging skilfully with others, at all hierarchical levels, in the complete and challenging environments of the wider system.

(Frontline empowerment, collaboration and persuasion across pathways, negotiating with the other stakeholders, influencing upwards etc).

Personal domain

Being highly self-aware and authentic; knowing one's own strengths, motivations, patterns, needs and limitations, and having the flexibility, confidence and resilience to adapt to the challenges of the changing context and the ambiguity of emerging policy.

The Connected Pharmacy Programme



Launch Event (community, hospital & primary care) and allocation to local networks by the LPC / PCN leads



Virtual Development Workshop 1 – (co-designed standardised material/approach across all local networks)



Cross Sector Initiatives (locally agreed) – Self facilitation by participants between workshops working and collaborating with peers in the local network



Virtual Development Workshop 2 (co-designed standardised material/approach across all local networks)



Celebration event for sharing best practice

GETTING THE MOST OUT OF THE PROGRAMME

- Invitation to be fully present and invest the time
- Reflection as part of improving personal effectiveness and team performance
- Encouragement to experiment and give feedback
- Focus on peer relationships/local networks



GUEST SPEAKER

JACKIE BUXTON

*Regional Senior Pharmacy Integration Lead –
NHS Midlands*



What is the purpose of Basecamp?

- Collaboration
- Networking
- Information & Resources
- Tasks & Updates



NEXT STEPS



You will receive a post launch email via Eventbrite that will include:

- Basecamp link and instructions to join
- Recording link of this webinar, and slides
- Programme workbook which includes:
 - Questions for reflections and personal actions
 - Preparation work for Workshop 1 (including questionnaire link and video link)



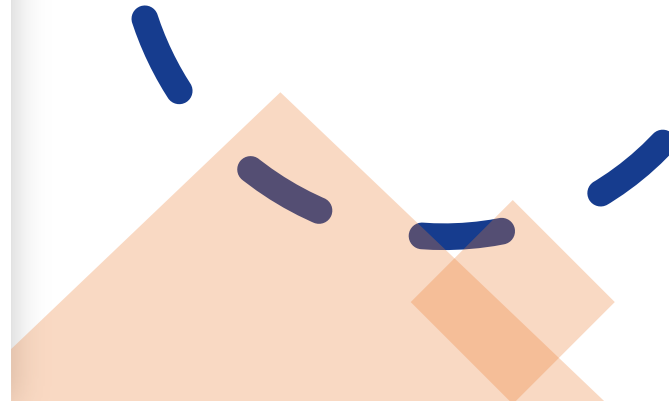
Head back to Mentimeter

What one action will you commit to do after this session?

www.menti.com

Add the code

4139 1293



**BOOK
WINNERS**

**Announcing the winners of
Guy Lubitsh's book, Connect!**



CLOSING STATEMENT

Caroline Goulding

The Future Vision: One Pharmacy Team

- We're creating a system-wide pharmacy service
- Clinical pharmacy professionals will be part of one team
- Working collaboratively, shared across Regional, ICS and PCN footprints
- With some pharmacy professionals in specialist roles providing enhanced support
- NHS England in the Midlands is investing in integrating pharmacy services
 - Regional Pharmacy Lead for Integration
 - Extra support for community pharmacy integration in each ICS
 - **The Connected Pharmacy Programme**



CONNECTED PHARMACY

*UNLOCKING & INTEGRATING
PHARMACY NETWORKS
ACROSS THE MIDLANDS*

Launch Webinar

4th May 2022



Thank you for listening!

