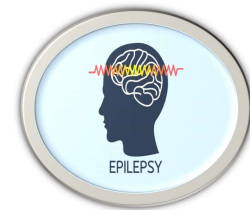




NMS Medicines List - Pharmacy staff guide

Please ensure you have familiarised yourselves with the new categories of drugs that have been added to the NMS as part of the NMS expansion scheme from September 2021. Some of these medications have multiple uses. The pharmacist will discuss with the patient regarding what they are using it for.

Epilepsy



The following are the most common drugs for osteoporosis that you will see being highlighted by the PMR:

The following are the most common drugs for Epilepsy that you will see in community pharmacy.

Carbamazepine
Clobazam
Clonazepam
Ethosuximide
Lacosamide
Lamotrigine
Levetiracetam
Oxcarbazepine
Phenobarbital
Phenytoin
Primidone
Topiramate
Zonisamide



NMS Medicines List - Pharmacy staff guide

Self-help counselling points

Treatment management,
Seizure management,
Lifestyle management,
Physician support

