



## NMS Medicines List - Pharmacy staff guide

Please ensure you have familiarised yourselves with the new categories of drugs that have been added to the NMS as part of the NMS expansion scheme from September 2021. Some of these medications have multiple uses. The pharmacist will discuss with the patient regarding what they are using it for.

### Parkinson's Disease

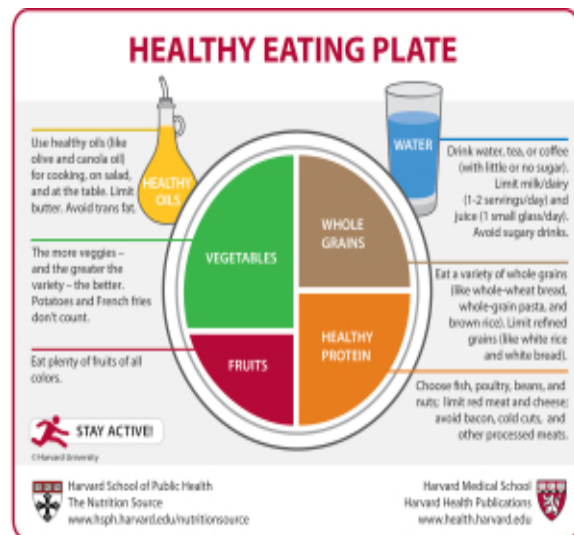


The following are the most common drugs for Parkinson's that you will see being highlighted in pharmacy

- **Amantadine**
- **Bromocriptine**
- **Co-Beneldopa**
- **Cabergoline**
- **Entacapone/Careldopa**
- **Levodopa/Carbidopa/Entacapone (Stalevo)**
- **Memantine**
- **Pramipexole**
- **Rasigiline**
- **Ropinirole**
- **Rotigotine**
- **Apomorphine**
- **Carbidopa**
- **Co-careldopa**
- **Pergolide**
- **Safinamide**
- **Procyclidine**
- **Trihexyphenidyl Hydrochloride**

## Self-help Counselling Points (Parkinson's)

- Parkinson's disease nurse specialist interventions
- Physiotherapy and physical activity
- Occupational therapy
- Speech and language therapy
- Nutrition
- Are they taking medication as directed?!
- Timing of medication very important for levodopa drugs
- Polypharmacy



## Consequences of poor adherence

- Increased anxiety
- Reduced motor function
- Exacerbates motor and cognitive symptoms
- Loss confidence self and clinicians
- Vicious circle
- Reduced rehabilitation potential
- Delayed discharge
- Time to regain previous function (if able to regain baseline)
- Reduced confidence in self
- COST!